

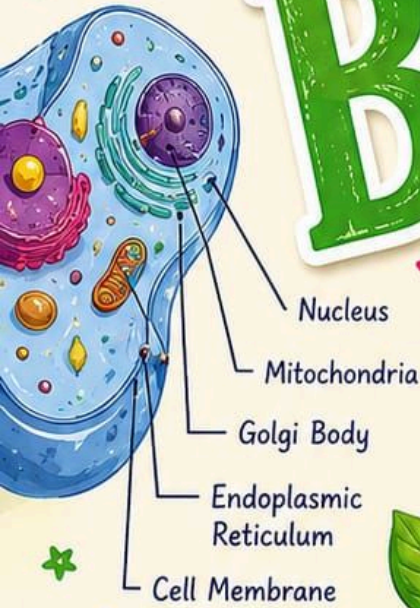


Little Rose — ACADEMY —

Learn Today
Lead Tomorrow
😊

BIOLOGY

THE STUDY OF LIFE



CLASS
10



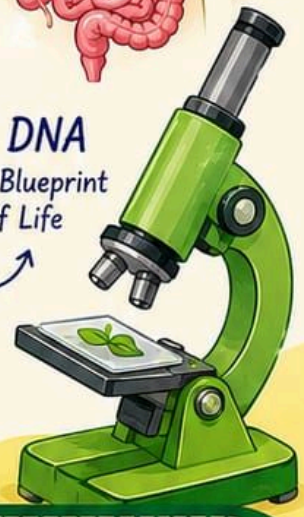
Understand Life
Appreciate Nature



- ### KEY TOPICS
- Life Processes
 - Control and Coordination
 - How do Organisms Reproduce?
 - Heredity and Evolution
 - Our Environment
 - Management of Natural Resources



DNA
The Blueprint of Life



Observe
Question
Explore
Discover

BELIEVE IN YOURSELF, EXPLORE BIOLOGY!

Class X – Biology

Summer Vacation Holiday

Homework Worksheet

Chapter: Life Processes

Topics: Autotrophic and Heterotrophic Nutrition, Dental Caries

Answer all questions.

Section A: Definitions

1. Define autotrophic nutrition.
2. Define dental caries.

Section B: Multiple Choice Qs

3. Organisms that prepare their own food are called:

- (a) Heterotrophs
- (b) Autotrophs
- (c) Saprophytes
- (d) Parasites

4. Which pigment is essential for photosynthesis?

- (a) Haemoglobin
- (b) Melanin
- (c) Chlorophyll
- (d) Keratin

5. The energy source for photosynthesis is:

- (a) Wind
- (b) Sunlight
- (c) Water
- (d) Soil

6. Dental caries is mainly caused by:

- (a) Fungi
- (b) Bacteria
- (c) Viruses
- (d) Protozoa

7. Which type of nutrition is found in humans?

- (a) Autotrophic
- (b) Heterotrophic
- (c) Photosynthetic
- (d) Chemosynthetic

Section C: Fill in the Blanks:

- 8. Green plants prepare food by the process of _____.
- 9. Chlorophyll is present in the _____ of plant cells.
- 10. Humans show _____ nutrition.
- 11. Dental caries damages the _____ of the teeth.
- 12. Brushing teeth _____ a day helps prevent dental caries.

Section D: True/False

13. Green plants are autotrophs. _____
14. Photosynthesis requires sunlight. _____
15. Dental caries is caused by tooth-friendly bacteria. _____
16. Humans depend directly or indirectly on plants for food. _____
17. Excessive consumption of sugary foods increases the risk of dental caries. _____

Section E: Short Answer Qs

18. Write any two differences between autotrophic and heterotrophic nutrition.
19. List the raw materials required for photosynthesis.
20. Why is chlorophyll important in photosynthesis?
21. Mention two causes of dental caries.
22. Write any two methods to prevent dental caries.



Little Rose Academy High School

Class: Tenth

Subject: Science (Chemistry)

Metals Metalloids Non-Metals

The zigzag line separates the metals from non metals

GROUP NUMBER

GROUP NUMBER

1	2	3	4	5	6	7	8	9	10	11	12	13	14	15	16	17	18
H	He	Li	Be	B	C	N	O	F	Ne	Na	Mg	Al	Si	P	S	Cl	Ar
		11	12	13	14	15	16	17	18	19	20	21	22	23	24	25	26
		K	Ca	Sc	Ti	V	Cr	Mn	Fe	Co	Ni	Cu	Zn	Ga	Ge	As	Se
		37	38	39	40	41	42	43	44	45	46	47	48	49	50	51	52
		Rb	Sr	Y	Zr	Nb	Mo	Tc	Ru	Rh	Pd	Ag	Cd	In	Sa	Sb	Te
		55	56	57	72	73	74	75	76	77	78	79	80	81	82	83	84
		Cs	Ba	La	Hf	Ta	W	Re	Os	Ir	Pt	Au	Hg	T	Pb	Bi	Po
		87	88	89	104	105	106	107	108	109	110	111	112	-	114	-	-
		Fr	Ra	Ac**	R1	Db	Db	Bh	Hs	M1	Ds	Rg	Dub	-	-	-	-

* Lanthanoides

** Actinoides

58	59	60	61	62	63	64	65	66	67	68	69	70	71
Ce	Pr	Nd	Pm	Sm	Eu	Gd	Tb	Dy	Ho	Er	Tm	Yb	La
90	91	92	93	94	95	96	97	98	99	100	101	102	103
Th	Pa	U	Np	Pu	Am	Cm	Rk	Cr	Es	Fm	Md	No	Lt